



IW25-1 Installation Steps & Procedures



Locate an area to install the dehumidifier. You need a drain, 110 V power & verify the location is suitable for the back of the de-humidifier to protrude from the other side of the wall.



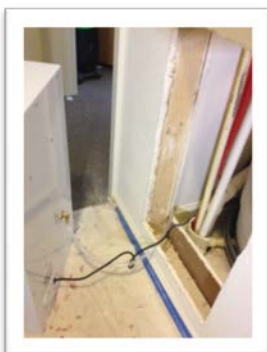
Confirm that there are no obstructions beyond the wall board like plumbing or electric lines.



Cut a hole in the sheet rock with a utility knife $\frac{1}{4}$ " larger than the actual dimensions of the rear of the dehumidifier. Make Sure the opening is square, plumb and offers bottom support for the unit. Opening Dimensions: 14.5"x25.5"x9.38"



Install 4 screws in mounting flanges, securely into the 2x4 wall studs directly through the sheet rock.



Securely insert the drain hose into your hub drain. Be certain the drain is below the brass outlet fitting on the rear of the dehumidifier. Fasten the hose securely to the wall with a continuous downward slope to the drain (with no bellies or kinks in the hose) so that it cannot be removed from the drain accidentally.



Plug the dehumidifier into a properly grounded, GFI receptacle



Set the dehumidifier to the desired humidistat setting and turn dehumidifier to the on position. Install the grill cover and secure with the enclosed tamper proof screws. Be careful not to over-tighten the screws.



***Install Notes: 1) Make sure drain hose is secured, not crimped (inside and outside of unit) and has continuous slope down and stays below the brass hose fitting outside of the unit, 2) Make sure bottom of dehumidifier is supported in wall via sheetrock or framing, 3) After install each unit should be tested by slowly pouring water into drain pan to ensure proper drainage, & 4) Remember there are no parts inside the dehumidifier that should be removed prior to installation – including the Styrofoam noise insulation shroud.**